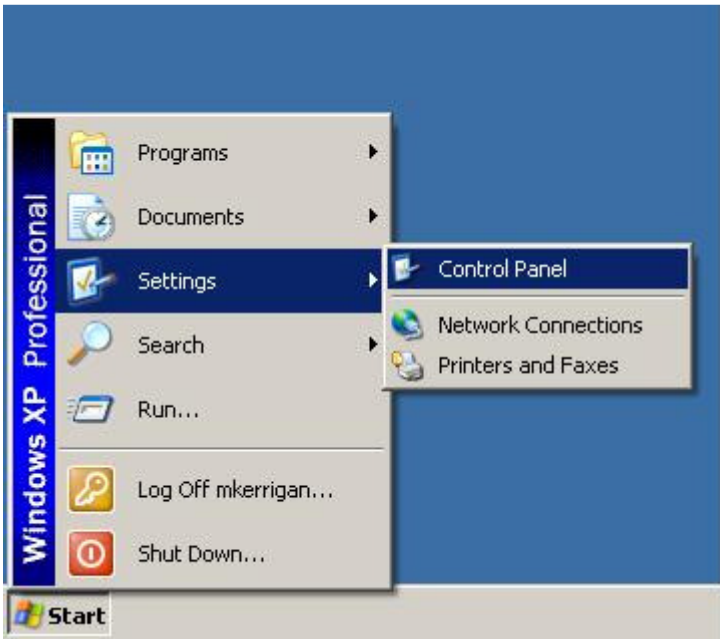


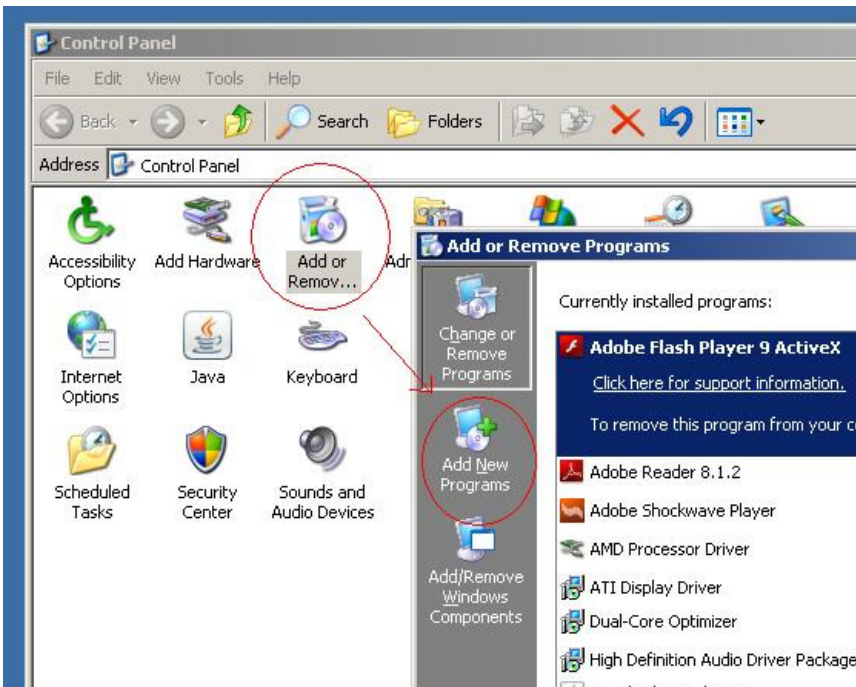
This document is intended to introduce you to Teacher Express Algebra Series.

To begin you must install the Teacher Express software on your machine to use certain features of this program. Follow the steps below to accomplish this task.

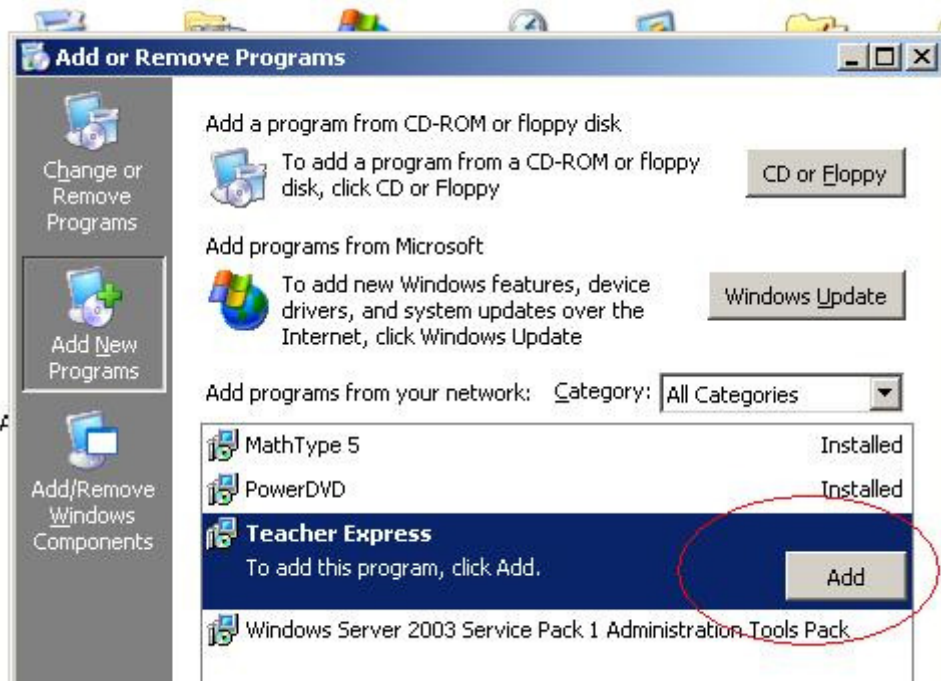
1. Open the 'Add/Remove Programs' module in found in the Windows Control Panel (see below)



Click on Start, Settings and select 'Control Panel'

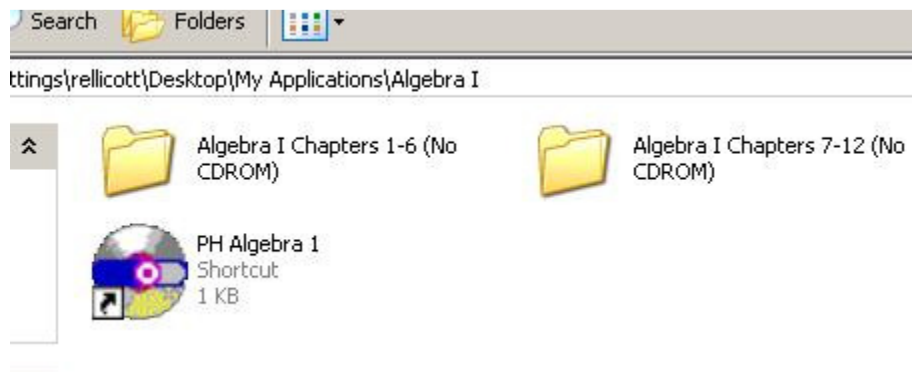


Double click 'Add/Remove Programs. On the resultant box select 'Add New Programs' from the left side menu.



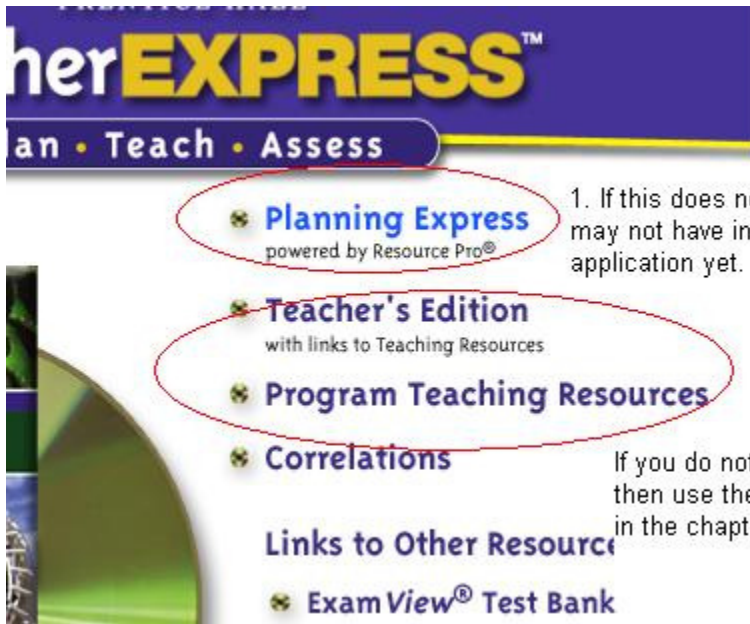
Locate 'Teacher Express' and click 'Add'... the program will install and give you confirmation of success... Done.

You will find a new Folder in your 'My Applications' folder 'Algebra I' (Algebra II) is on its way and will be organized in the same manner.



Prentice Hall Algebra 1 (PH Algebra 1) is the Application. This works best if you have the CDROM's however that is overcome by browsing for chapters in either of the two chapter folders.

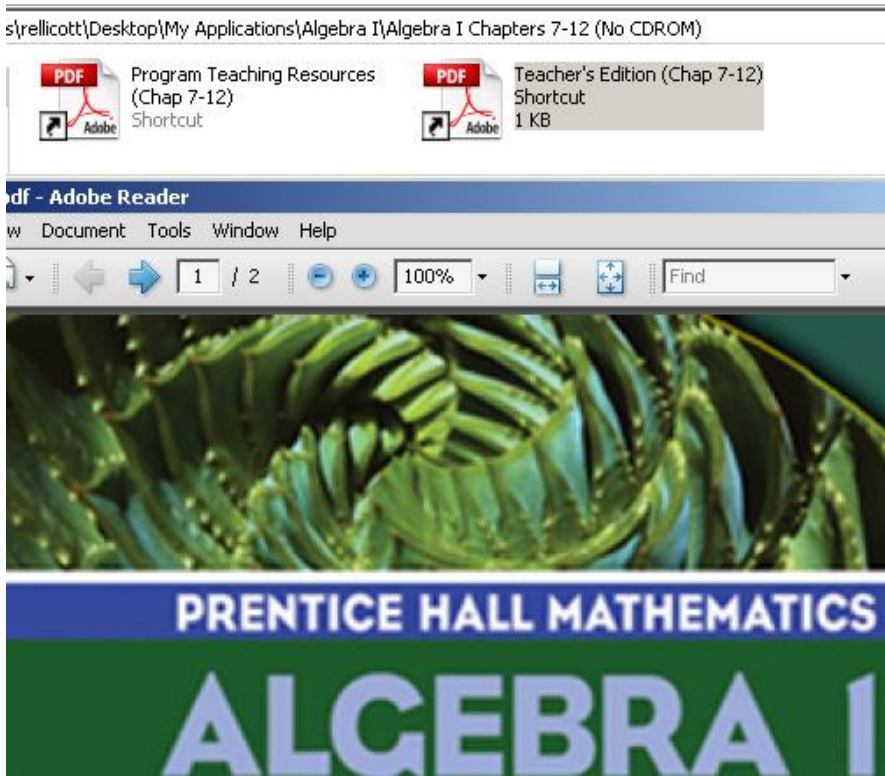
Double click this icon to launch the program. The program will launch with or without the CDROM inserted.



If you do not install the Application following the steps above 'Planning Express' will not work. You will click on the 'Planning Express' link and nothing will happen. If this is the case review the top portion of this document again.

If you have the CDROMs the other links will work as well. If the CDROM is not inserted you will be prompted to insert the CD at that time.

An alternative method is to use the icons located in the chapter folders. (see below)



Double click on either icon to access a network copy of the Prentice Hall software.

Done.