

This document is intended for users of System 3000 who have been imaged and are no longer part of the Novell network, but now operating on the new network. As of this writing Brick Township and Brick Memorial High Schools do not apply.

To install System 3000 as well as future applications the follow the easy instructions below:

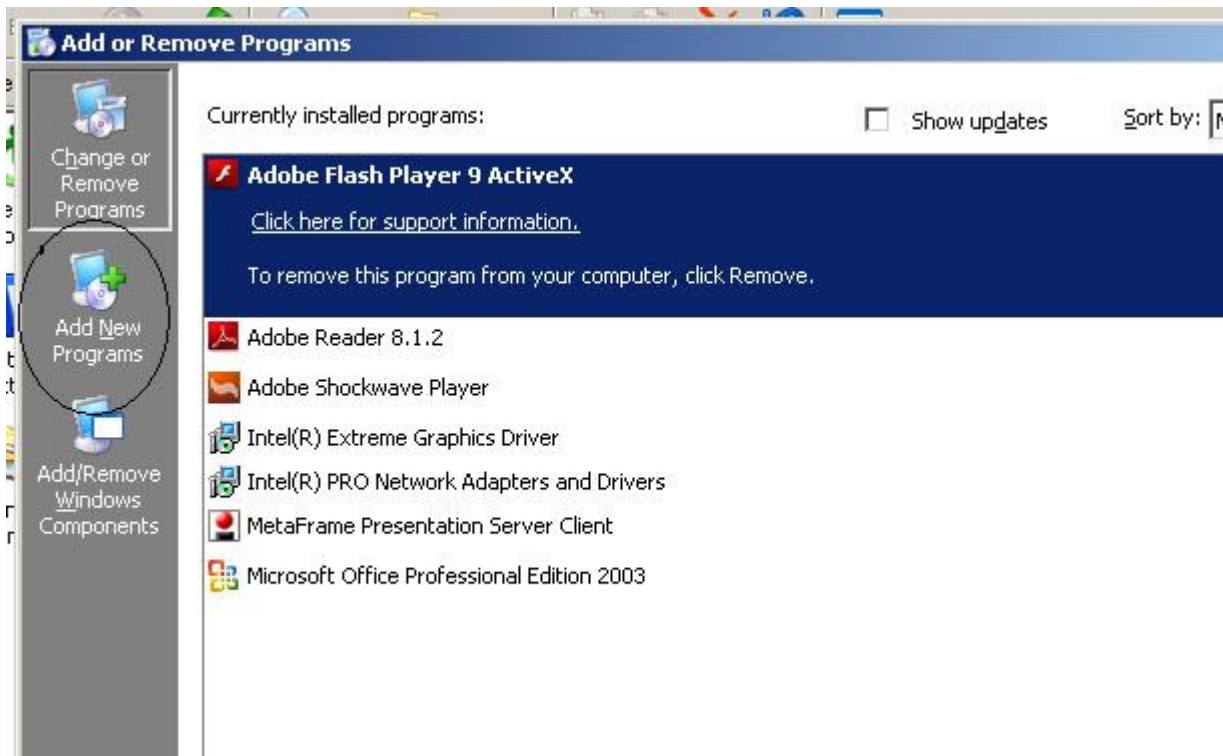
1. From your windows desktop open the 'Control Panel' (Start | Settings | Control Panel)



2. When the Control Panel open double click the 'Add / Remove Software' Icon



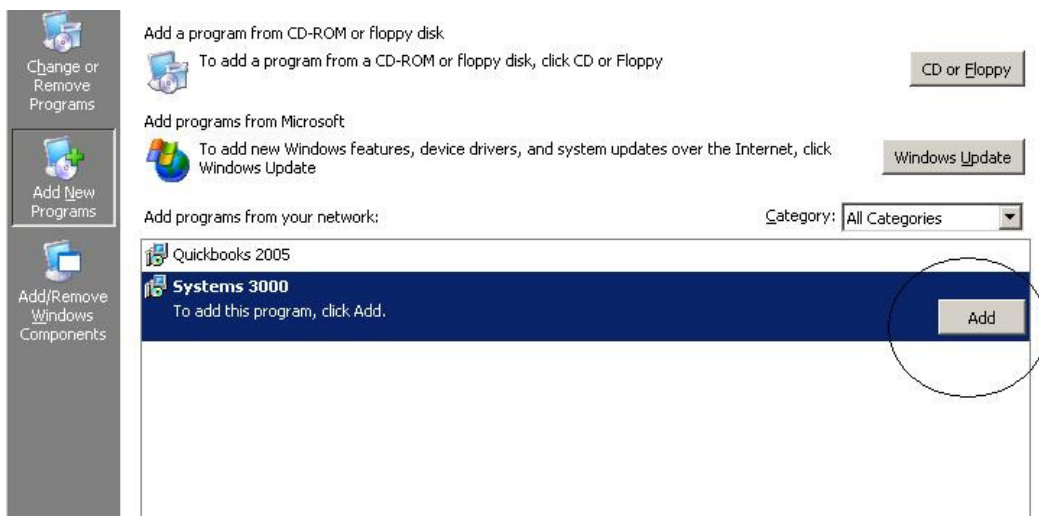
3. The resultant box should like like this:



While your list of installed software may differ, the frame should look the same. Notice on the left the button to 'Add New Programs', click on this icon (circled).

4. You should now see a list of network delivered applications available for install. If you do not see any software or the software package you are seeking (System 3000 in this case) you may not have been assigned to the application. If you do not see System 3000 as an available software package please let the technology department know so that we may add you to the group.

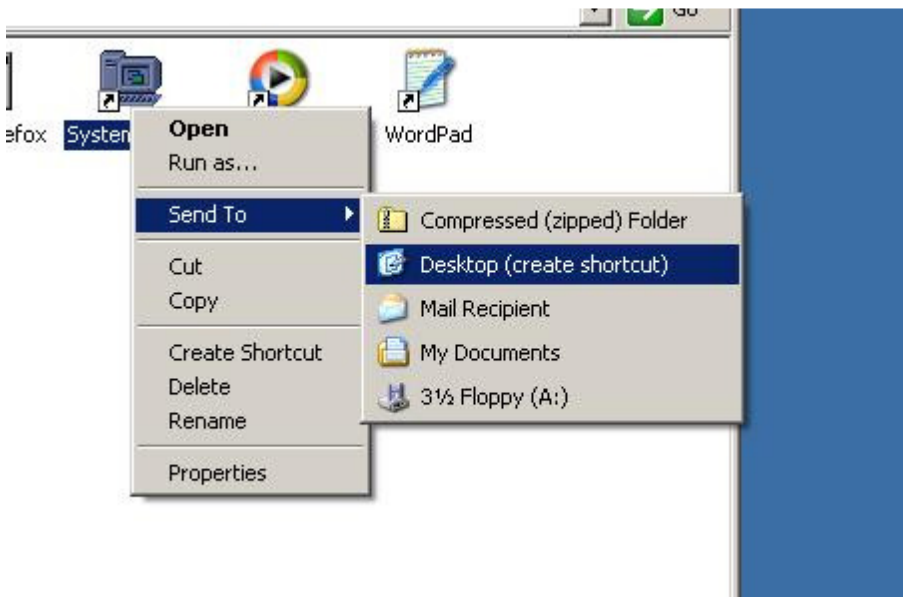
Assuming you are in the Systems 3000 group and see the Systems 3000 application package listed (see below) simply click the 'Add' button to the right (see below) to install the application on to your machine.



(click Add)



Once you see the message (above) simply log out and log back into the computer. On your desktop the folder called 'My Applications' will now have the Icon for System 3000. If you would like this icon on your desktop simply move your mouse over the icon, right click hover over the 'Send To' option and then click on 'Desktop (Create Shortcut). (See Below)



If you are experiencing problems with these directions or installing the program please contact the Technology Department.