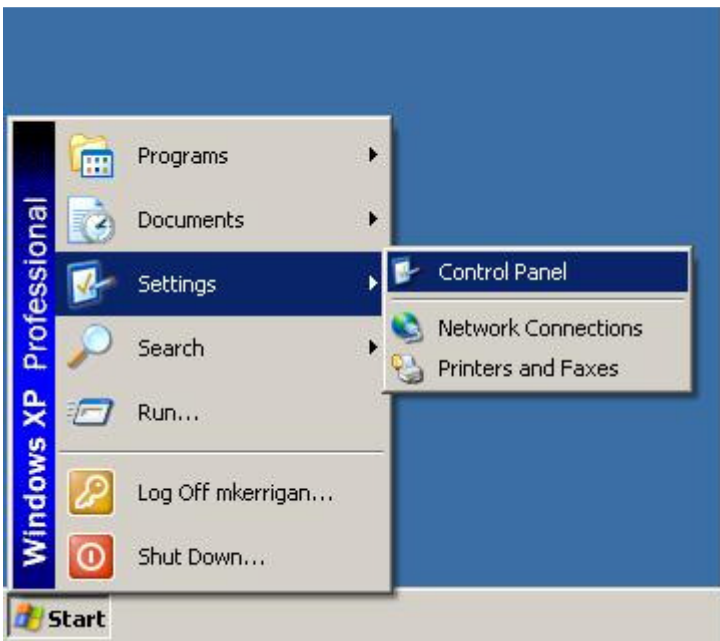


This document is intended for users of MathType 5

To install MathType 5 as well as future applications follow the easy instructions below:

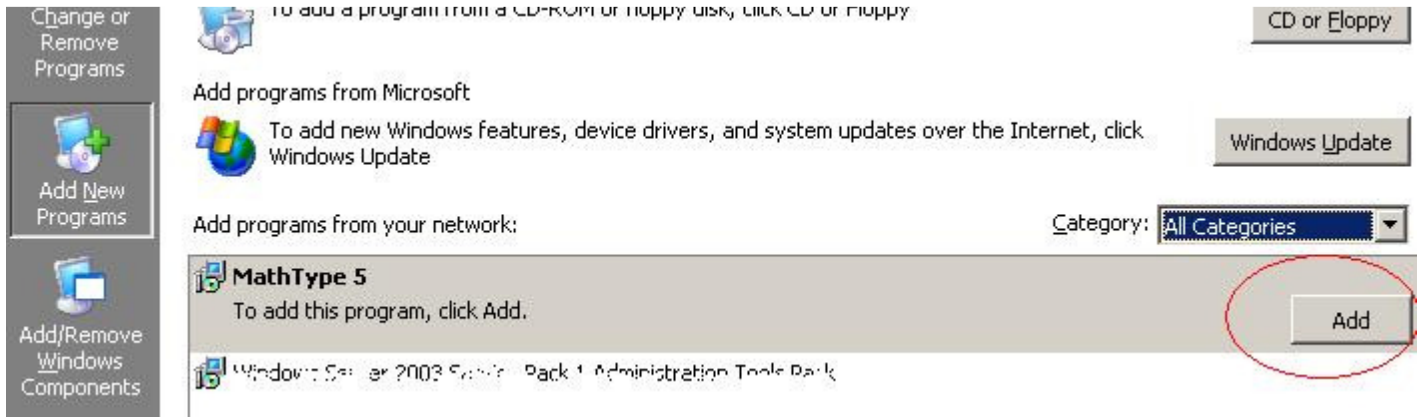
1. From your windows desktop open the 'Control Panel' (Start | Settings | Control Panel)



2. From the Control Panel double click on 'Add or Remove Programs', The 'Add or Remove Programs' box opens. From here select the option to 'Add New Programs' (see below).

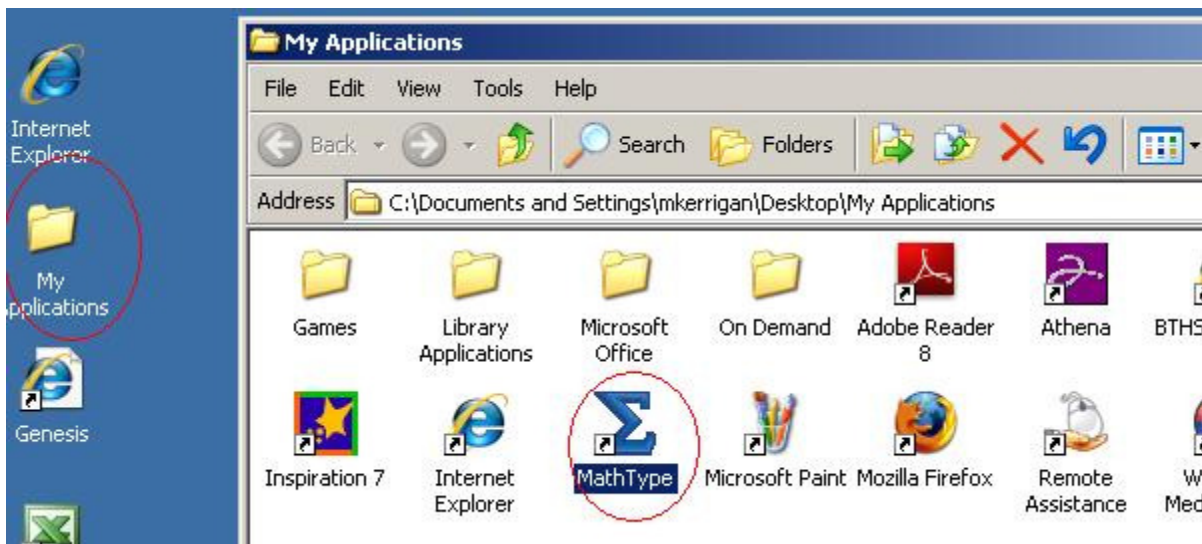


3. You should see a list (long or small) of available software that may pertain to you. One of these items should be 'MathType5'. Click the 'Add' button to the right on this entry. The software will quietly install (no user intervention is required). When complete close this box and the previous box until you are back at your desktop.

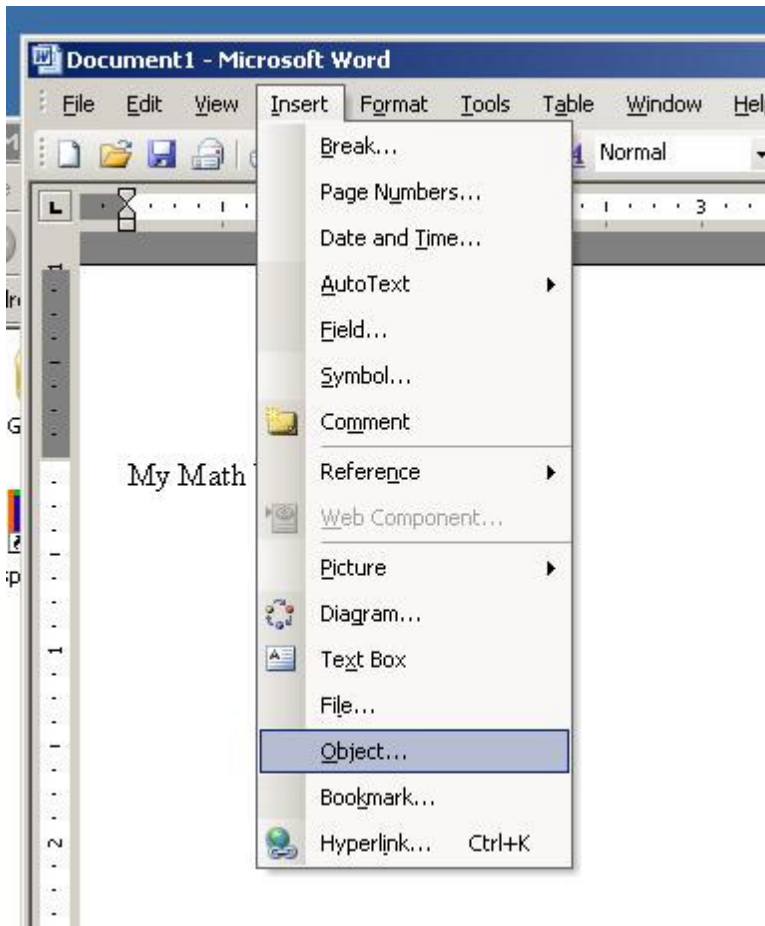


4. Logout and Log back into the system.

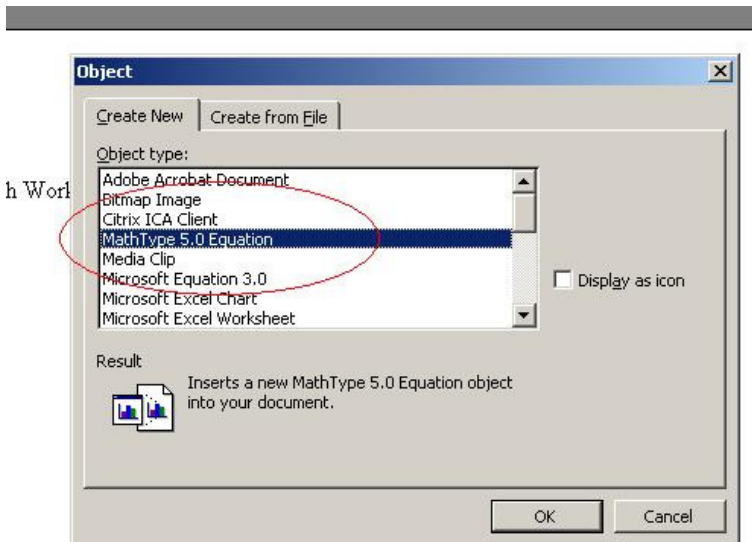
5. When logged back in open the 'My Applications' folder on your desktop. You should now see the MathType 5 icon / shortcut. From here you can begin work within the application. If you are interested in using this application from within Microsoft Office (Word, Excel, etc) read on.

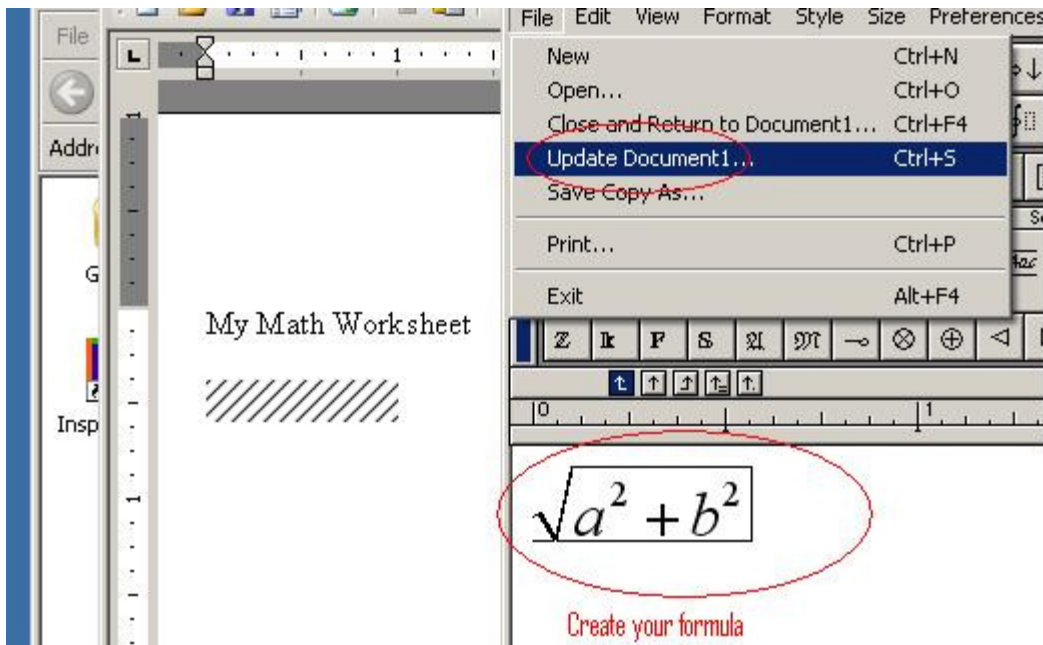


6. To access MathType 5 from within Word or Excel (for example) open the application. In this case I am using Microsoft Word. When I am ready to add Math formulas or any content for that matter from MathType 5 to Word I will select 'Insert' then 'Object' from the drop down menu (see below).

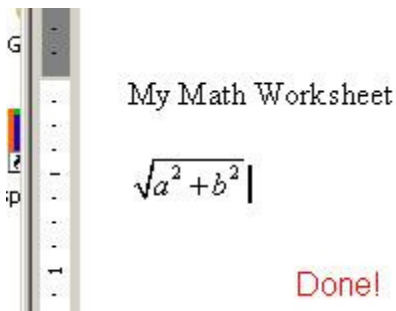


7. From the resultant box I will select MathType 5.0 Equation and then click 'OK'. The MathType 5 application will open for editing.





8. From the picture above, I will create the formula as needed with MathType5 when I am ready to put this information back into Microsoft Word I will then Select 'File' and then 'Update Document...' from the drop down menu. The work you have done in MathType will appear in the hash marked area of word.



9. Done! For more information about MathType 5 please refer to the help menu options within the program by pressing F1 or clicking on 'Help' in the upper right hand corner. Or you can visit their website at <http://www.mathtype.com>