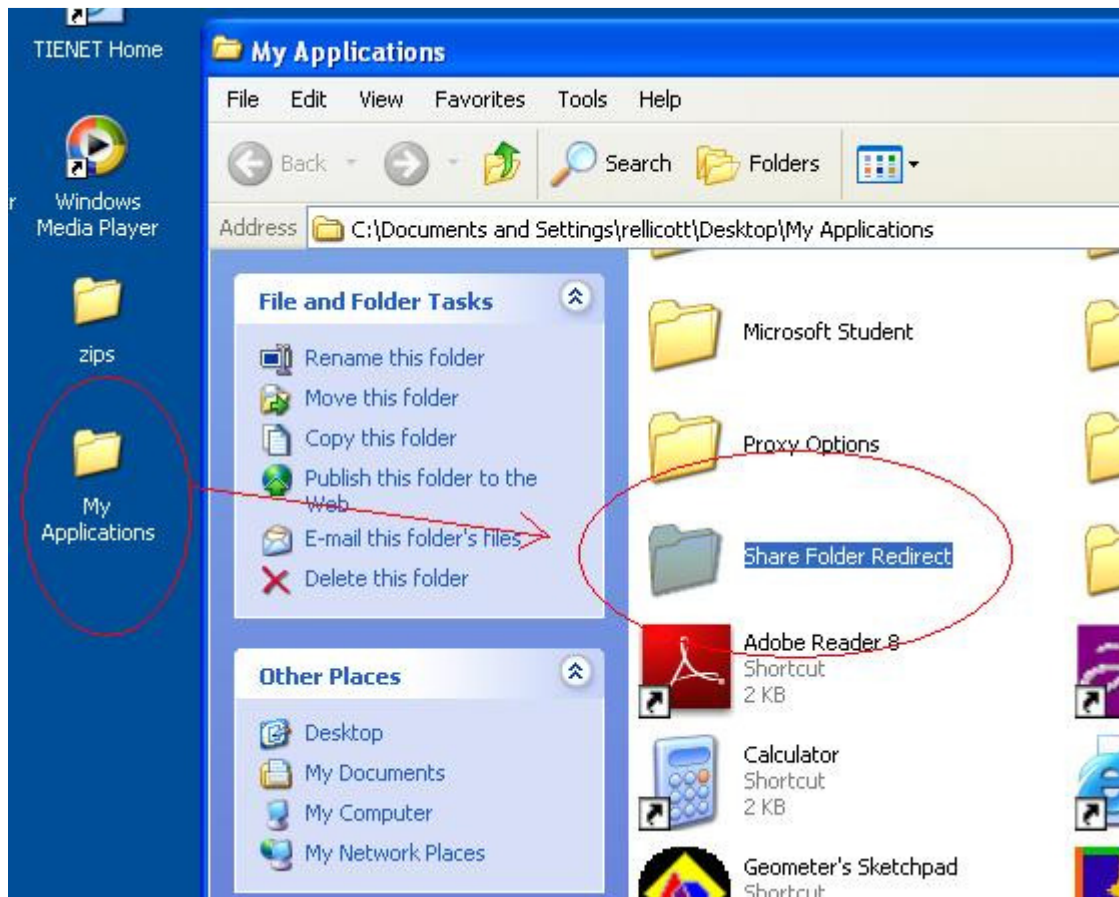
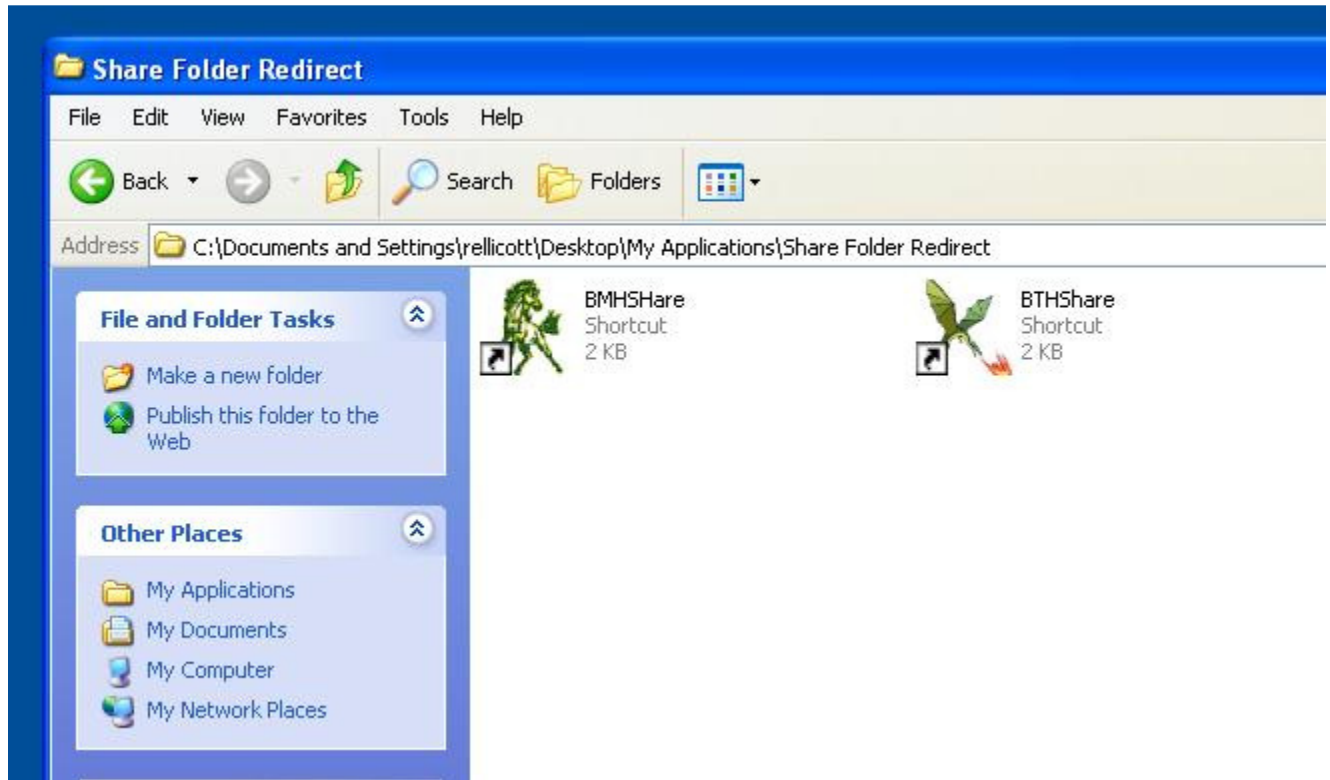


This document is intended for mobile administrators who need access to different school Shared Folders (W: drive).

In your 'My Applications' folder located on the desktop you should now see a new folder named 'Share Folder Redirect'. Double click this folder to reveal the contents within.



The two icons (see below): BMHShare and BTHShare, when clicked will map your W: drive to either school's Share folder. Now you can be in either high school and gain access to either W: drive.



Other schools W: drives are or will be made available on an 'as-needed' basis. The steps outlined here are the same for any school. You will have to be granted access prior to these icons working properly
